



SchemaFiber

Topology Management of
Fiber Optic Networks

INTRODUCTION

What it is:

SPECIALIZED SOFTWARE

SchemaFiber is an optical network diagrammatic management software. It is a part of the Newis Software SchemaSuite.

The software can work either as a stand-alone application or as a part of the SchemaSuite extending its capabilities to other network types.

WHO IS IT FOR

TELECOM companies, industrial services and corporate internal networks.

SchemaFiber is designed for businesses to manage large fibre infrastructures at a regional scale or for an entire country. It can also be used by industrial services or large companies to manage their internal network.

STRENGTHS OF THE APPLICATION

User-friendly

Lets you enter a network simply and quickly.

Performance

Designed with special attention to performance for the management of even dense fibre networks.

Modern Architecture.

Our application store datas into a database and is developed based on the latest technologies (Microsoft).

Open Architecture

Our application is based on a conceptual model which is open and documented.

Flexible utilisation

Capabilities to manage small internal fiber optic networks up to complex FTTH ones.

What it does:

MANAGEMENT

Visualization

SchemaFiber gives you schematic view of all optical fibre network components (fiber, splice boxes, patch panels, etc.).

Maintenance

Being able to visualize your network allows those who service the infrastructure the ability to guarantee that it is up-to-date and functions optimally on a permanent basis.

EXPLOITATION

Filtering fibres

Filtering fibres means you can quickly find a free path for a new connection and identifies bottle-necks in your network.

Connection propagation

Allows you to control network connectivity in case of failure cut and locating the failure.

Export of to-do list

Plan the work of your assembly teams with precision.

FEATURES

MAIN FEATURES

- All-in-one packaged tool designed for performance
- Real time liaison calculation between different objects
- Powerful filtering functions
- Customer and contracts management
- EDM (Electronic document management)

DESIGNED FOR TEAM JOB

- Strong multiuser architecture
- Project management

TECHNICAL

- Complete database persistence
- Object model management to speed up the establishment your network

DATA PRODUCTION

- Export a wide range of documents of different work and tasks to be executed
- Export statistics: Detailed object lists, synthesis, complex customizable filters

DATA IMPORTATION

- Custom data importation from different software sources available.

COMPLEX FIBER MANAGEMENT CASES:

The schematic editor is designed to easily draw all the following complex cases

- Midspan
- Tubes of tube cables
- Allow specific connection for each cable tube
- Cable and tubes which pass through node cable
- Octopus cable
- Splice box not connected cases

STATISTICS

The special statistics module allows you to export your to-do lists for your assembly team
Here are some examples of the possible exports:

Fibre connections

- Each fibre node indicates the actions to undertake

Splices

- Detailed list of each splice connection for a specific node

Patching

- Detailed list of each patch cable connection for a specific node

Fibers

- Detailed list of each fibre use for one specific cable allows you to filter several properties

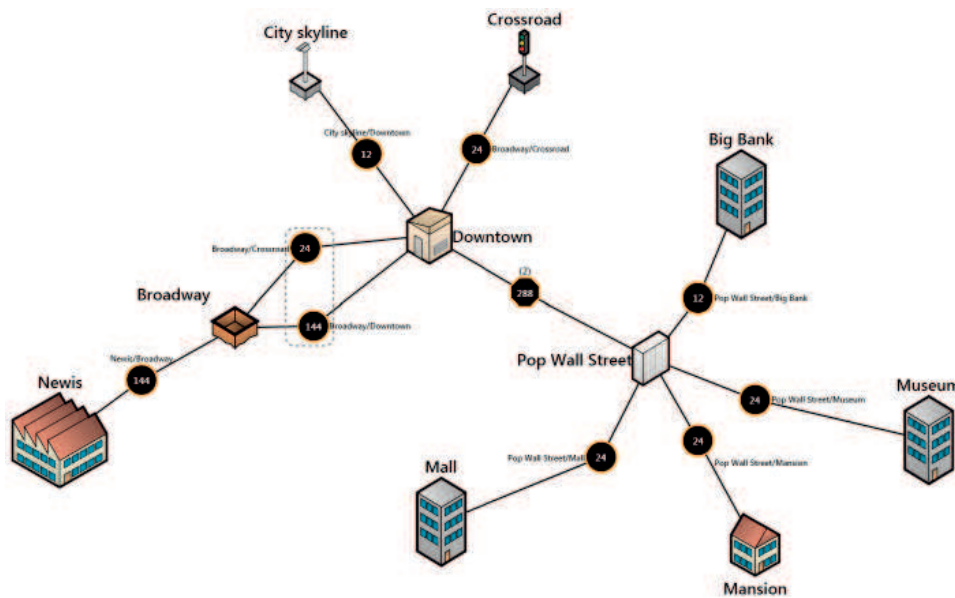
INTERFACE

The Schemafiber achitecture is developed to communicate with other applications (GIS, Invoice, etc.).

We are able to interface any other solution regarding your personal specific needs.

VISUALISATION LAYERS

SCHEMAFIBER 3 DIFFERENT GRAPHICAL LAYERS

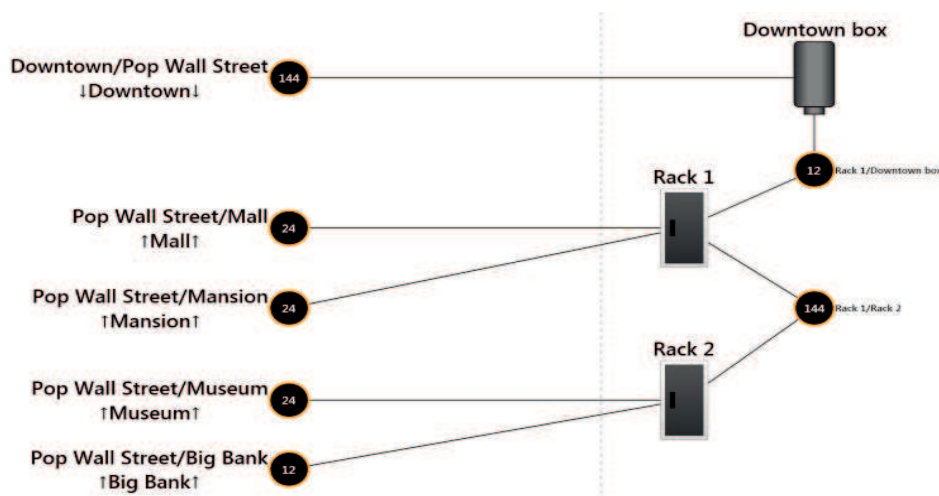


External schema - First view

This schema represents an external global view of your fibre optic network.

It gives you the perfect tool to get a quick complete overview in order to understand and manage your network. This schema displays all the external nodes of your network and all the cables connecting them.

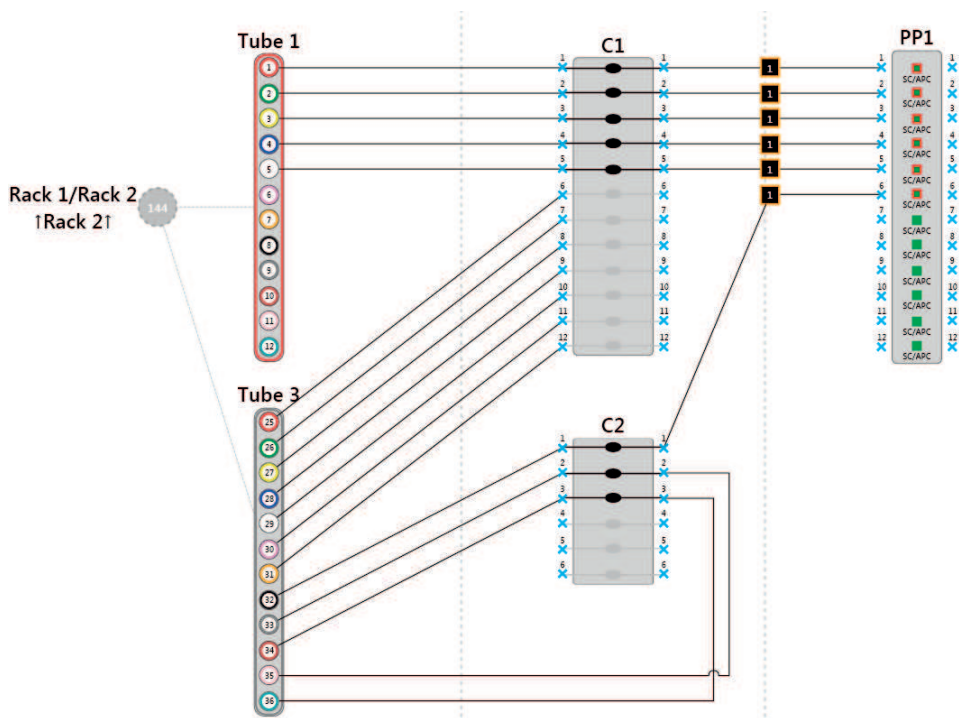
Powerful filtering functions can reduce schema complexity and within a few clicks, allows you to pinpoint the information you are looking for.



Internal schema - Go deeper with this second view

This schema represents the main internal fibre structures inside a fibre optic node.

This schema is used as an internal installation fibre layout.



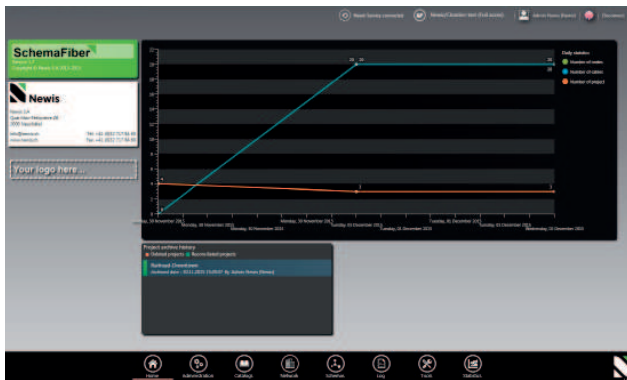
Detailed schema - Deeper and deeper, the third view is the most detailed of all the application

This schema represents all the connections of a fibre. It allows you to manage the connection of your fiber optic.

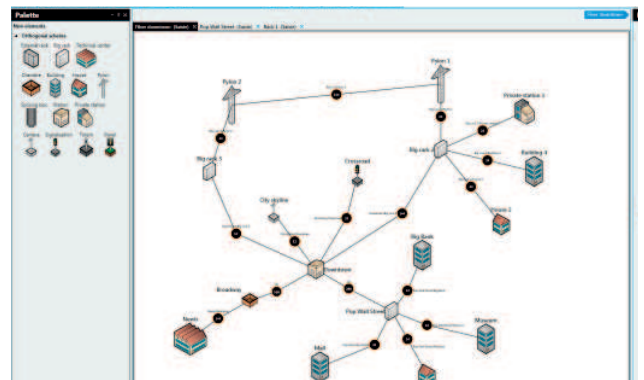
A range of functions of alignment allow the user to create a complete detailed schema. Created for an optimal utilisation, the detailed schema means the user can observe only the necessary objects under modification.

INTERFACE

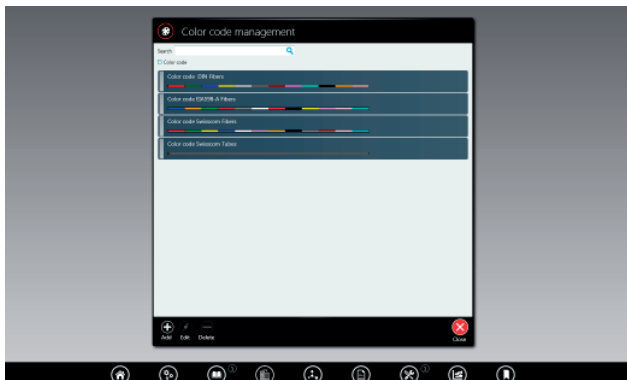
MODERN AND INTUITIVE USER INTERFACE



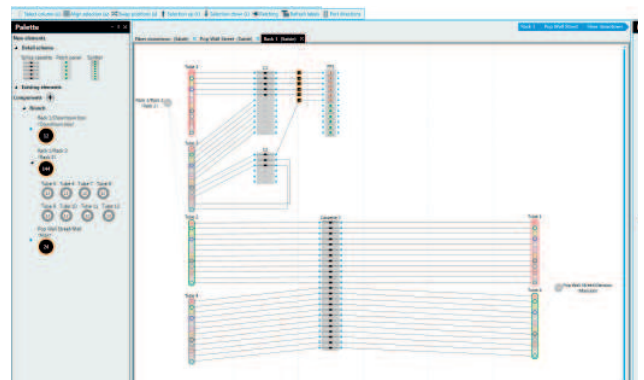
Homepage
Dashboard view



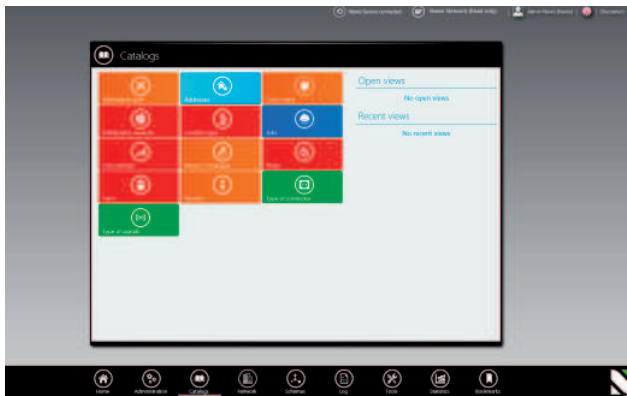
External schema
Main interface



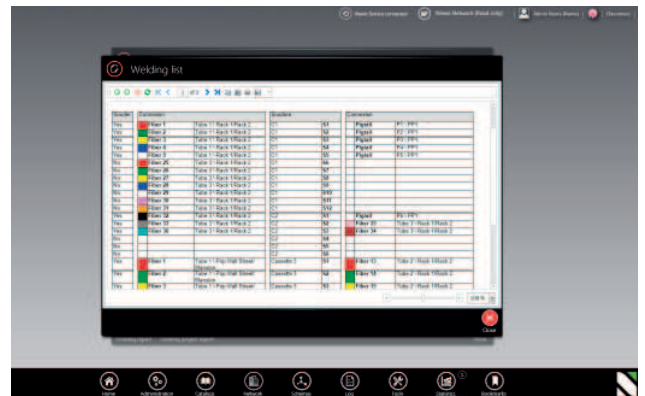
Color code catalog
Lets you manage all your fibers colors



Detail schema
Main interface



Parameters and catalog hub



Splice plan
Plan the welding work of you assembly teams



Liaison view
Real time fiber liaison calculation between different objects

FOR MORE INFORMATION :

Please contact us.

Our support team would be delighted to give you a demo and even set you up a test version so that you can get your own feeling for FiberSchema.

Our fiber optic experts are ready to discuss your fiber optic management needs and will go the extra mile to offer you some concrete solutions.



Quai Max-Petitpierre 28
CH - 2000 Neuchâtel
T: +41 (0)32 717 84 60
www.newis.ch